
Student Support Resources

The Office of Student Support

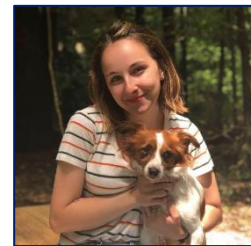
The Office of Student Support is committed to providing academic, fellowship, and financial support through innovative, data-driven programs. We empower students with the knowledge and resources to excel academically and professionally by building a network of support across and beyond Columbia University.



Phong Luu, Director



Jasmine Porter, Intern



Emma Weeks, Student Assistant

SPS Student Support Resources

Academic Support Workshops

The Office of Student Support has developed a comprehensive workshop portfolio to meet the diverse needs of School of Professional Studies students. Partnering with various departments across Columbia University, workshops range from foundational writing skills for graduate students, research practices utilizing Columbia libraries, and wellness sessions in collaboration with Alice! Health Promotion. Please visit [SPS Engage](#) to view the full portfolio of SPS Student Support workshops.

SPS Tutoring Program

The SPS Tutoring Program is intended to help students fill existing gaps in knowledge and to become independent learners in a particular subject. As an expert in a content area, tutors provide support and clarification for material that students have trouble understanding. Tutoring is intended to be a short term solution that will benefit the student throughout their time in the School of Professional Studies and into their careers. Tutoring content areas include: English language writing and speaking, statistics, programming, mathematics, finance, and Excel. Visit [SPS Engage](#) to learn more and students can register for a tutor at http://bit.ly/sps_tutor.

Scholarships and Financial Aid

Students seeking financial aid at Columbia University can visit the [SPS website](#) (<https://bit.ly/sps-scholarship>) to explore various funding opportunities available to them as members of the SPS community. The Office of Student Support has also curated a list of relevant external scholarship opportunities for students pursuing their Master of Science degrees as Columbia University.

Questions? Please contact sps-studentservices@columbia.edu

SPS Student Support Resources (cont.)

Fellowships

The Office of Student Support collaborates with university stakeholders and fellowship organizations to bring various prestigious fellowship opportunities, such as the Fulbright Program and Peace Corps, to SPS students. The office can provide guidance and help students prepare their applications in order to submit a comprehensive application. Students seeking information and an interest in applying for fellowships should contact the Office of Student Support (sps-studentservices@columbia.edu).

Academic Integrity

As members of the Columbia University community, all students are expected to uphold the highest standards of respect, integrity, and civility. These core values are key components of the Columbia University experience and reflect the community's expectations of its students. Students are expected to conduct themselves in an honest, civil, and respectful manner in all aspects of their lives. Students who violate standards of behavior related to academic or behavioral conduct interfere with their ability, and the ability of others, to take advantage of the full complement of University life, and will thus be subject to Dean's Discipline. [Click here \(https://bit.ly/sps-ai-faculty\)](https://bit.ly/sps-ai-faculty) to learn more.

Office of Disability Services Accommodations

The [Office of Disability Services \(ODS\) \(https://bit.ly/columbia-ods\)](https://bit.ly/columbia-ods) at Columbia University oversees accommodations for all students at the University. They serve over 2,700 students annually across campus, from first-year undergraduates to doctoral candidates completing their dissertations. Their office works with students with all types of disabilities: physical, hearing, visual, chronic medical conditions, psychological, temporary, ADHD, and learning disabilities. They partner closely with medical providers to determine eligibility for accommodations and services; ODS aims to support the full participation of students with disabilities in all aspects of University life. [Click here \(https://bit.ly/sps-accommodations\)](https://bit.ly/sps-accommodations) to learn more.

Phong Luu serves as the SPS liaison for ODS in the School of Professional Services, please contact him with any questions or concerns about accessibility accommodations.

Additional Resources

[SPS Engage](#)

[Remote Learning Support Guide](#)

[Best Practices for Online Learning](#)

[Guide for Parents and Caretakers](#)