

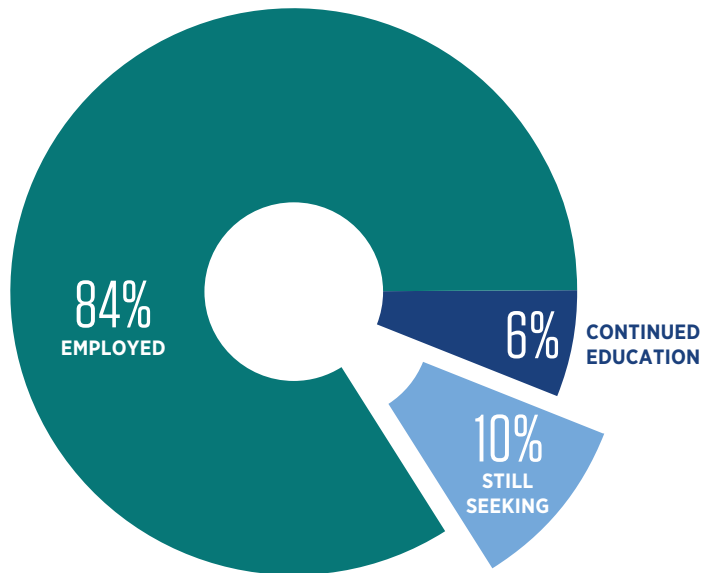
CAREER OUTCOMES FOR 2017 SPS GRADUATES

SPS graduates are employed above the national averages,* receive highly competitive salaries, and are *career ready*** when they graduate.

EMPLOYED AT GRADUATION

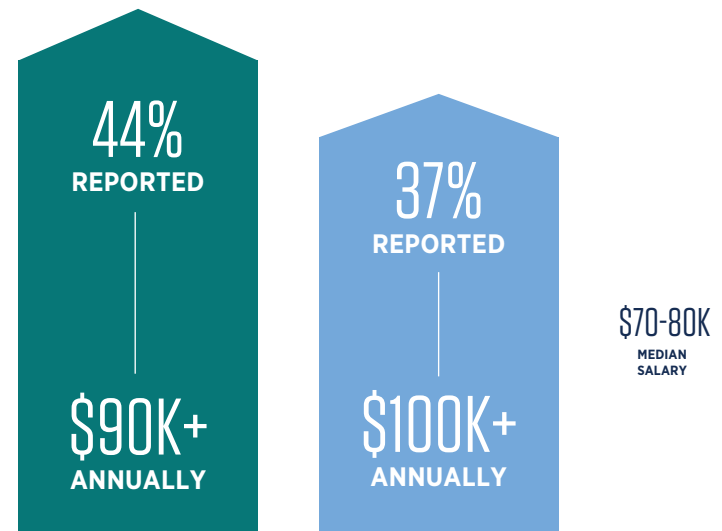
FISCAL YEAR 2017 ASSESSMENT PERIOD: JULY 1, 2016 — JUNE 30, 2017

CAREER OUTCOMES RATES*** M.S. DEGREE GRADUATES: 90%



KNOWLEDGE RATE****: 93% [472 STUDENTS OUT OF 506]

POST-GRADUATE SALARIES PERCENTAGE OF M.S. DEGREE GRADUATES THAT REPORTED SALARIES



* Source for "above national averages" provided by NACE.

** Career readiness is the attainment and demonstration of requisite competencies that broadly prepare college graduates for a successful transition into the workplace.

*** Number of graduates who have landed in any of the employment categories, plus Volunteer Service plus Active Military plus Continuing Education, divided by the number of students for whom an outcome is known.

**** Percentage of the graduating class for which an outcomes destination is known. It includes the sum of all the employment categories, plus Volunteer Service plus Active Military plus Continuing Education plus the number of students Still Seeking an outcome or Not Seeking an outcome. It excludes those students for whom no information is available.